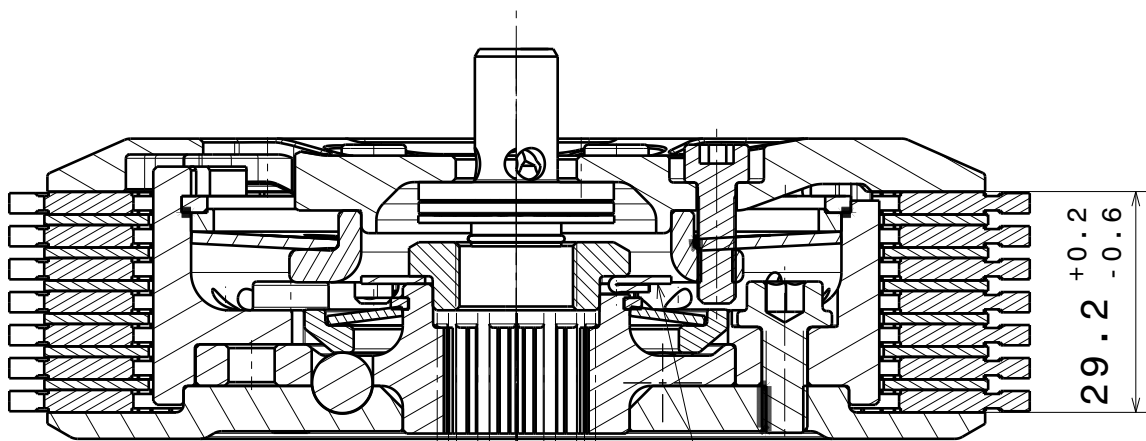
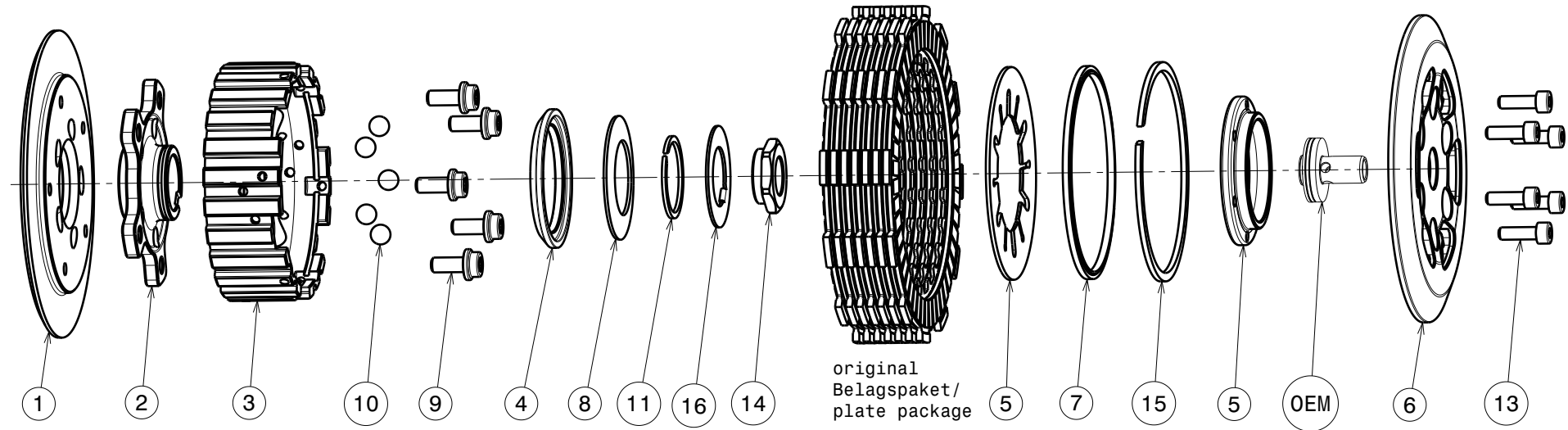


004-27005-1 SuterClutch Husqvarna TC250 2010-



-Die Scheibe Nr.16 biegen
um die Mutter zu sichern!
-Bend the washer No.16
to lock the nut!

Das angegebene Belagspaketmass ist zwingend einzuhalten!
The plate package thickness must be strictly adhered to!

ITEMS LIST (500)

ITEM	PART NAME	SRT NUMBER	QTY
1	BACK PLATE 30°	004-27725	1
2	HUB CARRIER	004-27703	1
3	INNER HUB	004-27745	1
4	RELEASE RING	004-09975	1
5	KLAMP HUB 5.0mm	004-00505	1
6	PRESSURE PLATE	004-27945	1
7	DISK SPRING MAIN 47x86x1100N	004-86110	1
8	TORQUE LIMITER SPRING 850N	004-50085	1
8.1	TORQUE LIMITER SPRING 750N	004-50075	1
8.2	TORQUE LIMITER SPRING 950N	004-50095	1
9	BALL 8.0MM 60HRC	004-17801	5
10	SCREW M6x14 HEXAGON SOCKET	004-17814	5
11	Circlip 30mm	004-17803	1
12	Circlip 86mm HOLE SB86	004-17886	1
13	Bolts M5x16 12.9	BN7 M5x16	6
14	SPECIAL NUT M16x1	004-31955	1
15	LOCKING RING 86	004-00686	1
16	Locking Washer 24/41	004-37671	1