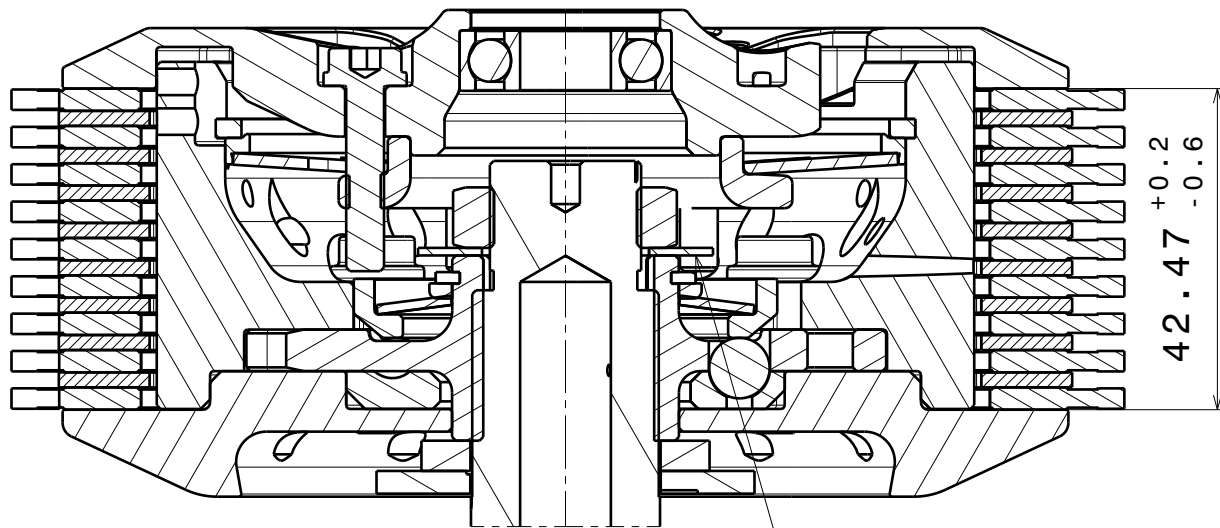
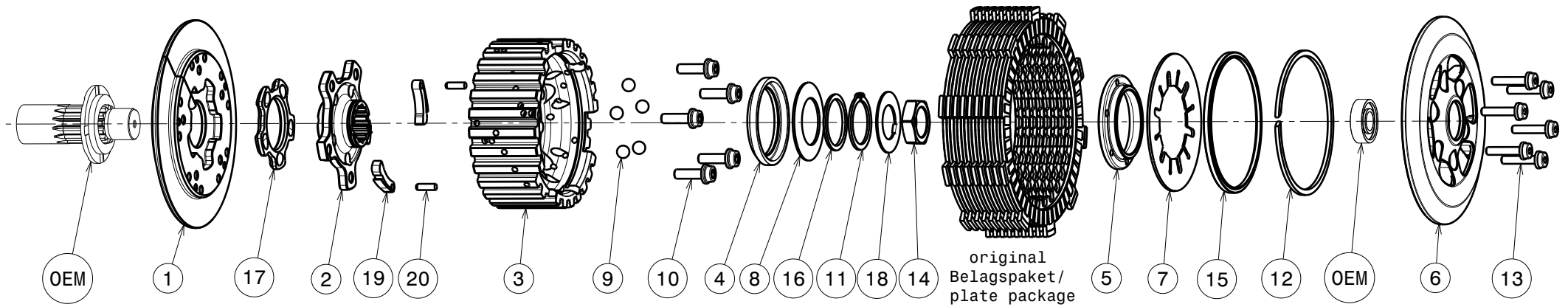


004-16022-2 SuterClutch Yamaha R6 Starter Racks 06-16



-Die Scheibe Nr.18 biegen um die Mutter zu sichern!
-Bend the washer No.18 to lock the nut!

Das angegebene Belagspaketmass ist zwingend einzuhalten!
The plate package thickness must be strictly adhered to!

ITEMS LIST (791)			
ITEM	PART NAME	SRT NUMBER	QTY
1	BACK PLATE INSERT	004-16723	1
2	HUB CARRIER RACKS	004-16703	1
3	INNER HUB RACKS	004-16742	1
4	RELEASE RING	004-15975	1
5	KLAMP HUB 5mm	004-00505	1
6	PRESSURE PLATE	004-16941	1
7	DISK SPRING MAIN 47x88x1310N	004-88131	1
8	TORQUE LIMITER SPRING 850N	004-50085	1
8.1	TORQUE LIMITER SPRING 750N	004-50075	1
8.2	TORQUE LIMITER SPRING 950N	004-50095	1
9	BALL 8.0MM	004-17801	5
10	SCREW M6x20	004-17815	5
11	CIRCLIP 30mm	004-00030	2
12	CIRCLIP 90mm	004-17804	1
13	DISTANCE SCREW M5x24.5	004-05245	6
14	NUT M20x1	004-998201080	1
15	LOCKING RING 90mm	004-00690	1
16	DISTANCE RING	004-17610	1
17	RAMP INSERT 35° / 3.6mm	004-00724	1
17.1	RAMP INSERT 37.5° / 3.6mm	004-00725	1
17.2	RAMP INSERT 32.5° / 3.6mm	004-00723	1
18	LOCKING WASHER	004-07670	1
19	RACK ELEMENT	004-35761	2
20	PIN ø4x14	004-28780	2