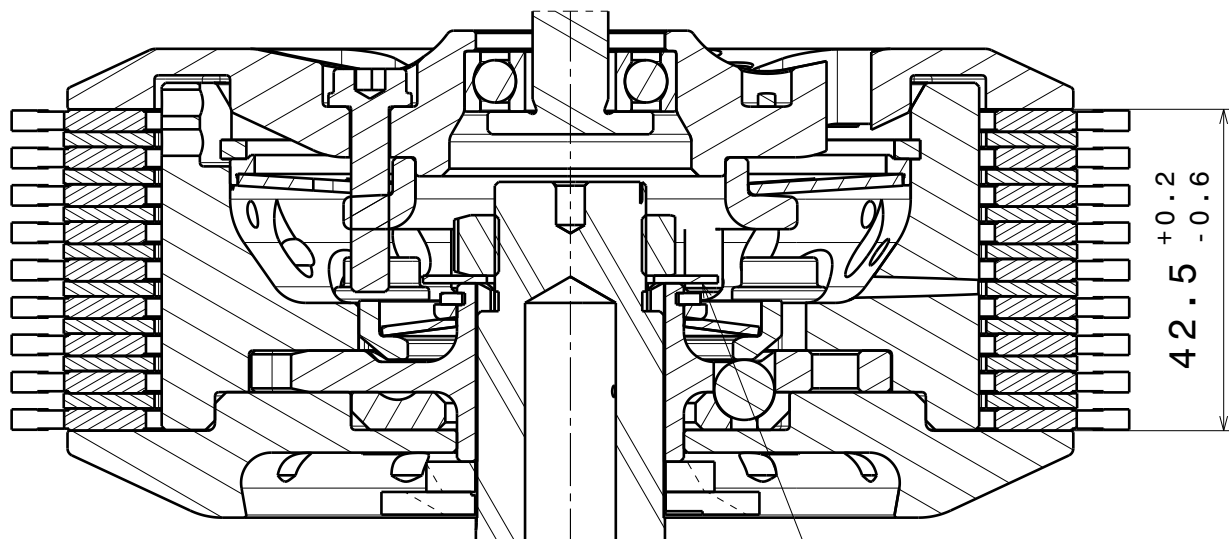
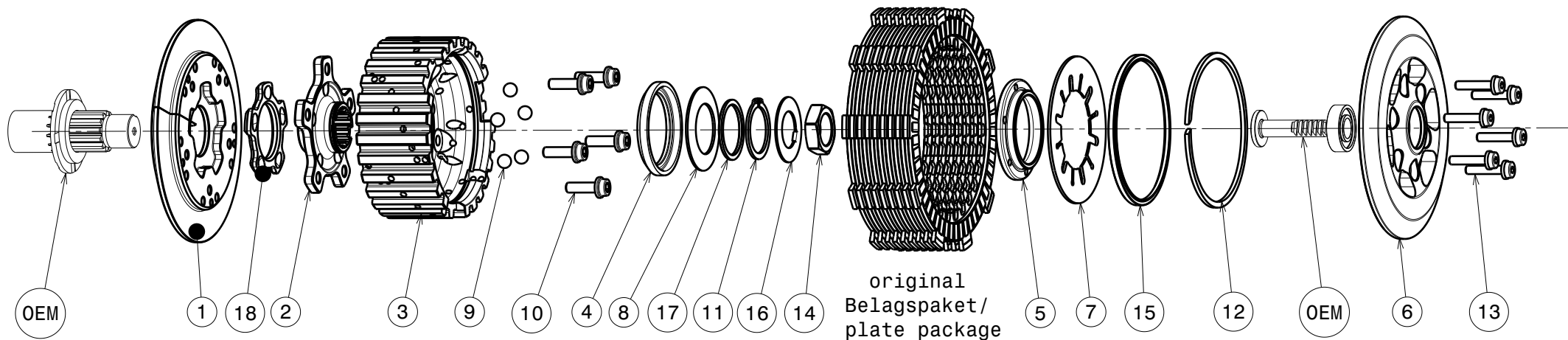


# 004-16002-3 SuterClutch Yamaha R6 06-17



-Die Scheibe Nr.16 biegen um die Mutter zu sichern!  
-Bend the washer No.16 to lock the nut!

**Das angegebene Belagspaketmass ist zwingend einzuhalten!**  
**The plate package thickness must be strictly adhered to!**

ITEMS LIST (357)

| ITEM | PART NAME                           | SRT NUMBER       | QTY      |
|------|-------------------------------------|------------------|----------|
| 1    | BACK PLATE 35°                      | 004-16723        | 1        |
| 2    | HUB CARRIER                         | 004-16704        | 1        |
| 3    | INNER HUB                           | 004-16741        | 1        |
| 4    | RELEASE RING                        | 004-15975        | 1        |
| 5    | KLAMP HUB 5mm                       | 004-00505        | 1        |
| 6    | PRESSURE PLATE                      | 004-16942        | 1        |
| 7    | <b>DISK SPRING MAIN 47x88x1310N</b> | <b>004-88131</b> | <b>1</b> |
| 8    | <b>TORQUE LIMITER SPRING 850N</b>   | <b>004-50085</b> | <b>1</b> |
| 8.1  | TORQUE LIMITER SPRING 750N          | 004-50075        | 1        |
| 8.2  | TORQUE LIMITER SPRING 950N          | 004-50095        | 1        |
| 9    | BALL 8.0MM                          | 004-17801        | 5        |
| 10   | SCREW M6x20                         | 004-17815        | 5        |
| 11   | CIRCLIP 30mm                        | 004-00030        | 2        |
| 12   | CIRCLIP 90mm                        | 004-17804        | 1        |
| 13   | DISTANCE SCREW M5x24.5              | 004-05245        | 6        |
| 14   | NUT M20x1                           | 004-998201080    | 1        |
| 15   | Locking Ring 90mm                   | 004-00690        | 1        |
| 16   | LOCKING WASHER                      | 004-07670        | 1        |
| 17   | DISTANCE RING 2mm                   | 004-17610        | 1        |
| 18   | RAMP INSERT 35°                     | 004-00724        | 1        |