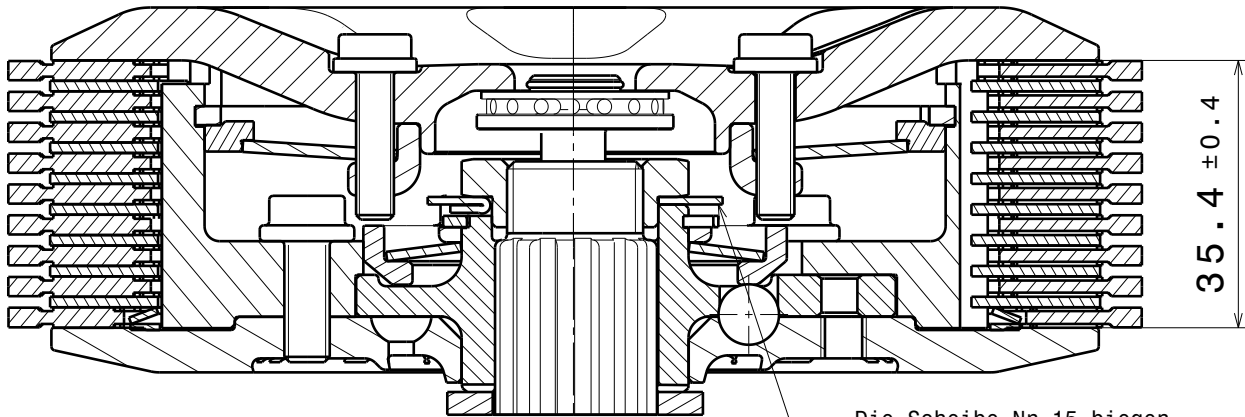
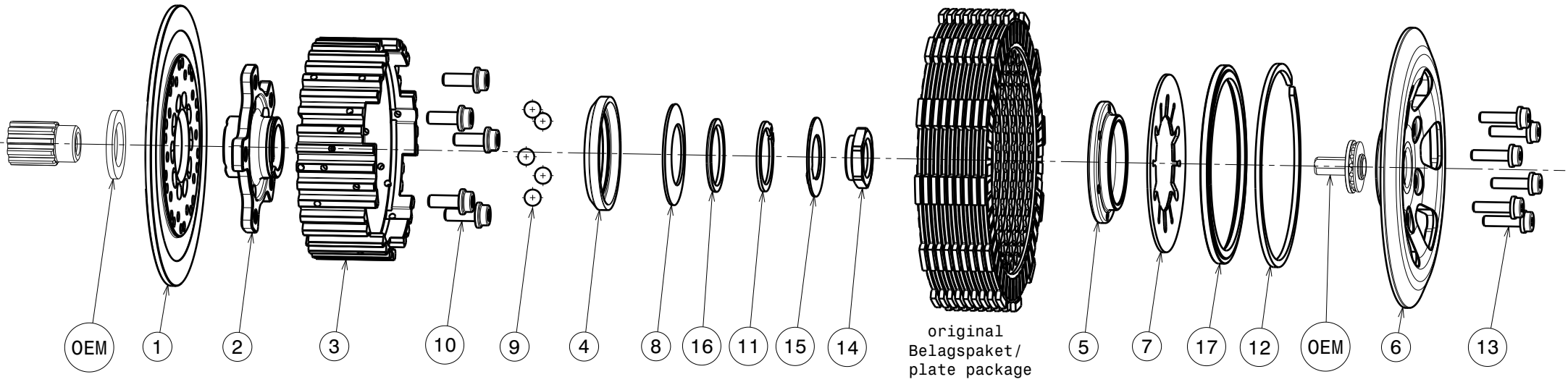


# 004-10003-2 SuterClutch Husaberg 570 09-11



-Die Scheibe Nr.15 biegen um die Mutter zu sichern!  
-Bend the washer No.15 to lock the nut!

**Das angegebene Belagspaketmass ist zwingend einzuhalten!**  
**The plate package thickness must be strictly adhered to!**

ITEMS LIST 355			
ITEM	PART NAME	SRT NUMBER	QTY
1	BACK PLATE <i>montiert 32.5°</i>	004-06721	1
2	HUB CARRIER	004-06700	1
3	INNER HUB	004-06740	1
4	RELEASE RING	004-15975	1
5	KLAMP HUB 5.0mm	004-00505	1
6	PRESSURE PLATE	004-10945	1
7	<b>DISK SPRING MAIN 47x88x1310N</b>	<b>004-88131</b>	<b>1</b>
8	<b>TORQUE LIMITER SPRING 1100N</b>	<b>004-50110</b>	<b>1</b>
8.1	TORQUE LIMITER SPRING 750N	004-50075	1
8.2	TORQUE LIMITER SPRING 950N	004-50095	1
8.3	TORQUE LIMITER SPRING 1300N	004-50130	1
9	BALL 8.0MM	004-17801	5
10	SCREW M6x16	004-17816	5
11	CIRCLIP 30mm	004-00030	1
12	CIRCLIP 100mm	004-17833	1
13	DISTANCE SCREW M5x19.5	004-05195	6
14	NUT M18X1.5	004-06955	1
15	LOCKING WASHER 22/39	004-07670	1
16	DISTANCE RING 30X36X2	004-17610	1
17	LOCKING RING 98	004-00698	1