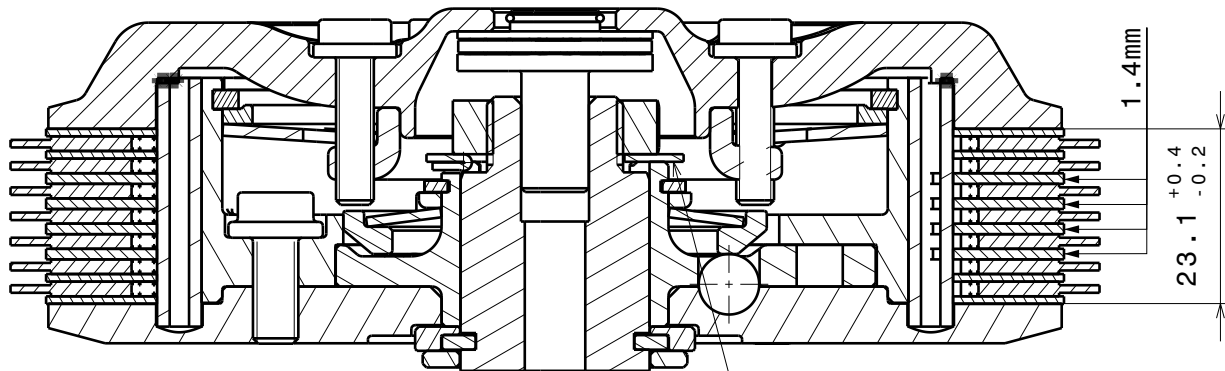
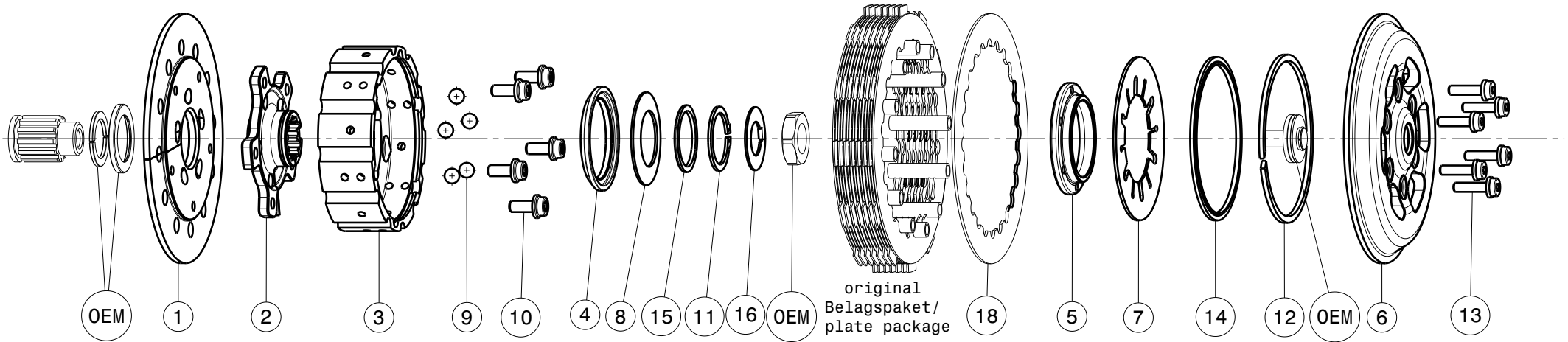


004-09003-2 SuterClutch KTM XC 450/525 (QUAD) 2008-2011



-Die Scheibe Nr.16 biegen um die Mutter zu sichern!
 -Bend the washer No.16 to lock the nut!

Das angegebene Belagspaketmass ist zwingend einzuhalten!
The plate package thickness must be strictly adhered to!

ITEMS LIST (304)			
ITEM	PART NAME	SRT NUMBER	QTY
1	BACK PLATE 30°	004-09720	1
2	HUB CARRIER	004-09701	1
3	INNER HUB	004-09740	1
4	RELEASE RING	004-09975	1
5	KLAMP HUB 5.0mm	004-00505	1
6	PRESSURE PLATE	004-09940	1
7	DISK SPRING MAIN 47x88x1700N	004-88170	1
8	TORQUE LIMITER SPRING 1300N	004-50130	1
8.1	TORQUE LIMITER SPRING 750N	004-50075	1
8.2	TORQUE LIMITER SPRING 1100N	004-50110	1
8.3	TORQUE LIMITER SPRING 1500N	004-50150	1
9	BALL 8.0MM	004-17801	5
10	SCREW M6x14	004-17814	5
11	CIRCLIP 30mm	004-00030	1
12	CIRCLIP 90mm	004-17804	1
13	DISTANCE SCREW M5x19.5	004-05195	6
14	LOCKING RING 88mm	004-00688	1
15	DISTANZ RING 30X36X2	004-17610	1
16	LOCKING WASHER M18/34	004-08670	1
18	STEEL DISK 1.4mm	004-09814	1